

SPEEDOMETER PRO

FOR MT4

Installation Manual and User Guide



Thank you for purchasing the **speedOmeter Indicator** from
mt4exclusive.com.

INSTALLATION

To start using the **speedOmeter**© indicator you must **install the following files**.

STEP 1.

The following files must be saved in the indicators folder of your MT4

- speedOmeter_BASIC.ex4
- **speedOmeter_PRO.ex4**
- speedOmeter_tick_chart.ex4

For example, if you downloaded the MT4 from ALPARI UK, you'll save the indicators in the following folder:

C:\Program Files\ MetaTrader - Alpari UK\experts\indicators

Or if you downloaded it from METAQUOTES.NET, you'll save it here:

C:\Program Files\MetaTrader 4\experts\indicators

In some cases the Metatrader 4 folders are located outside the Program Files folder. If you don't know the exact location of your Metatrader 4, just simply right click on the MT4 shortcut on your desktop or in your start menu, choose Properties, and the location of your Metatrader will be displayed under the shortcut tab. Copy the above mentioned files in these folders.

STEP 2.

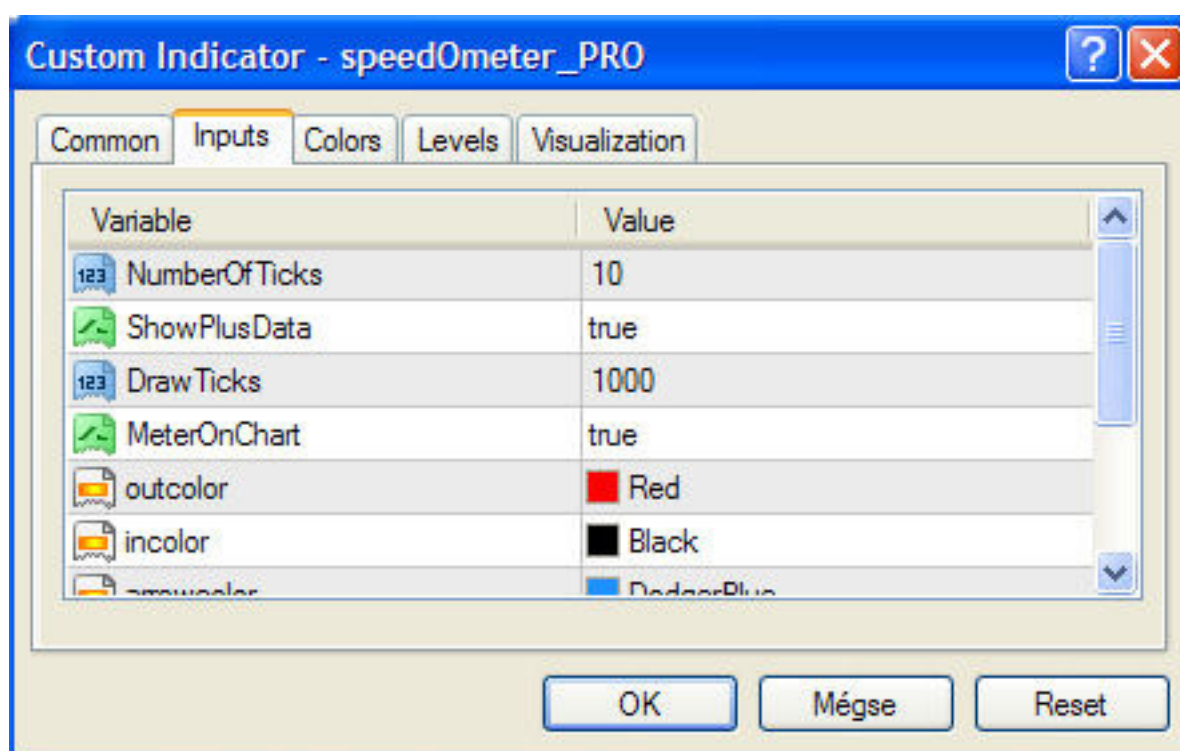
- Save the file speedOmeter.ttf on your PC
- Start Control Center, and double click on the FONTS shortcut
- When you have the FONTS library open, click on file in the menu, and select ADD NEW FONT
- Go to the folder where you previously saved the file speedOmeter.ttf
- Select the font speedOmeter (true type)

Once the message „Font is successfully installed, restart your Metartader Terminal. Now you are ready to use the speedOmeter© indicator.

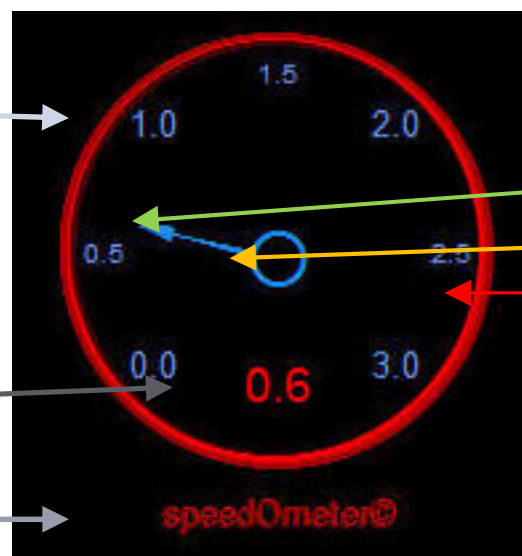
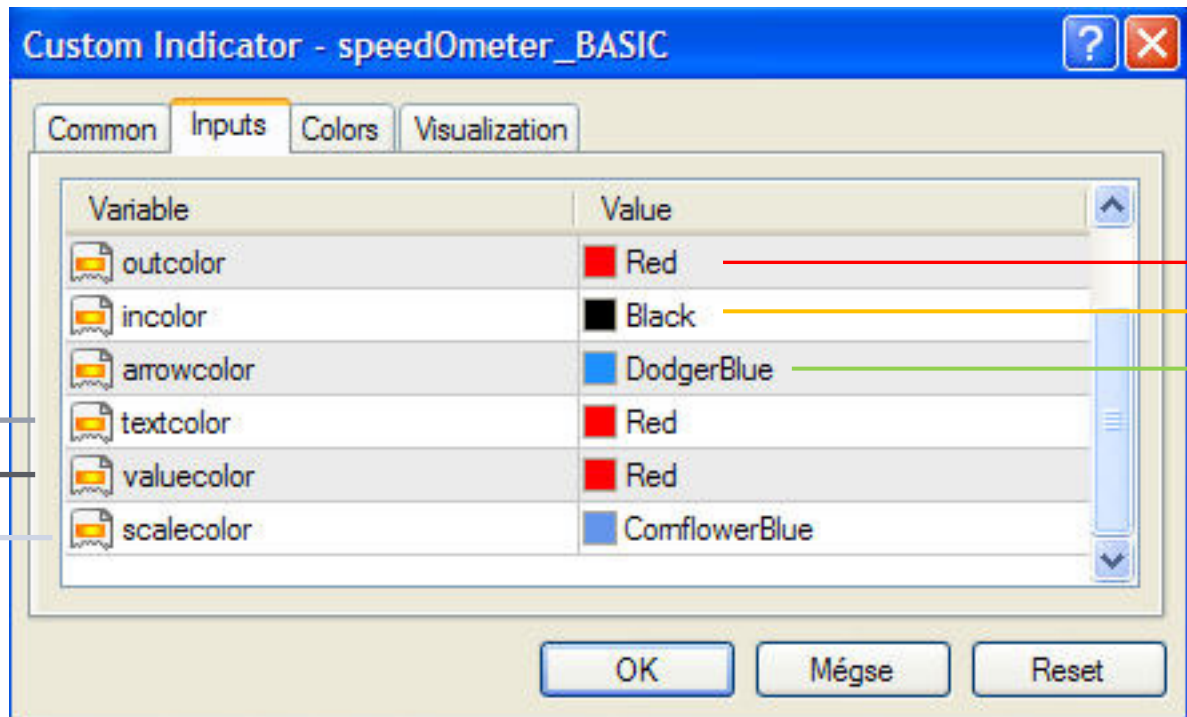
USER GUIDE

speedOmeter© PRO

- User input **NumberOfTicks** is to set the calculation period for the speed.
- User input **ShowPlusData** is to set if the Indicator should display additional informations on the top-left corner of the screen
- User input **DrawTicks** is to set for how many ticks the speed should be displayed in the speed chart
- **MeterOnChart**
if **true** – the *speedOmeter* will be drawn in the chart window
if **false** – the *speedOmeter* will be drawn in the indocator window



The colors for the *speedOmeter* can be set in the user inputs as follows:



Customize the speedOmeter

Should you have any special expectations the speedOmeter is not offering at the minute, please do not hesitate and let us know about your needs. Please send an email with detailed description to development@mt4exclusive.com

speedOmeter Support

Should you need any technical support, please contact us immediately at support@mt4exclusive.com